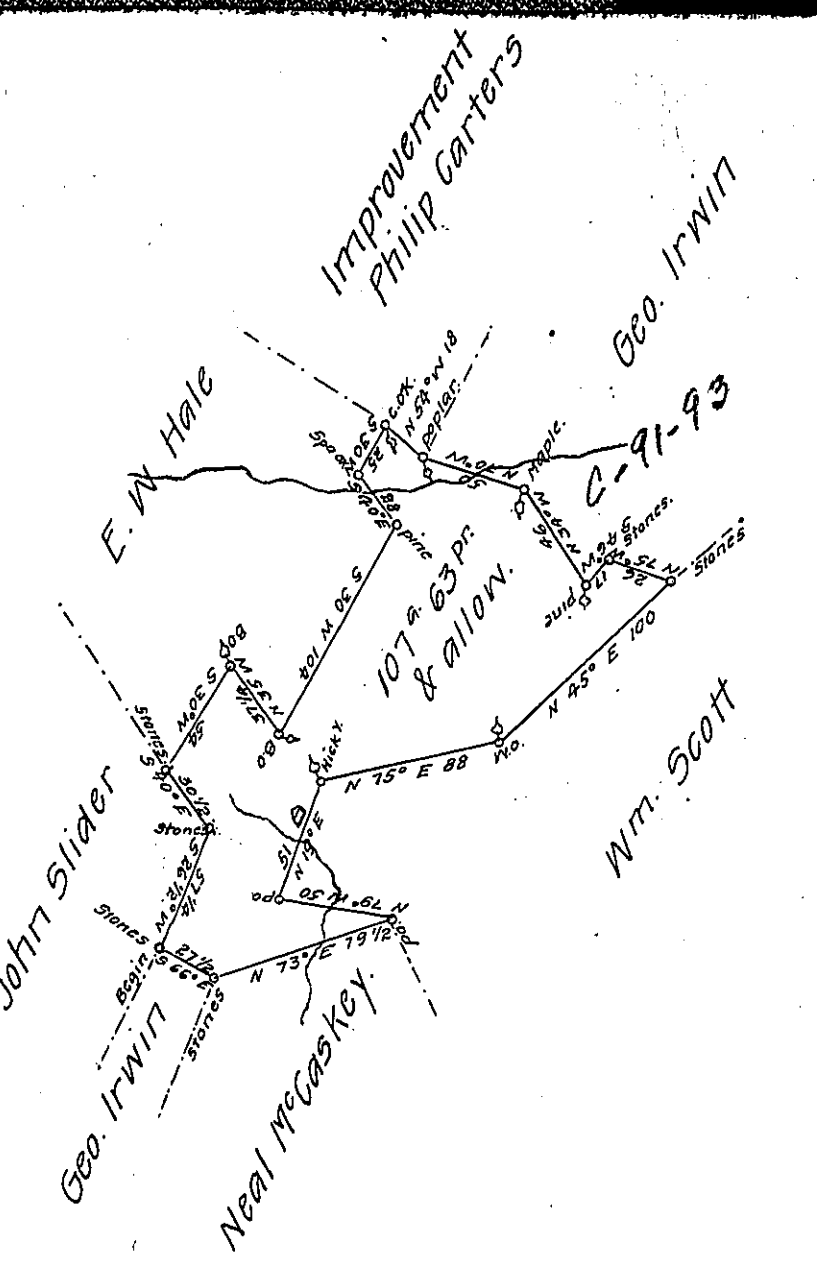


FORM NO. 1.



A draught of a tract of land, situate in Wagne township  
 Mifflin County, which appears to have been survey'd the 2<sup>d</sup> day  
 of May 1801 & 21<sup>st</sup> day of August 1805, in pursuance of a warr-  
 ant to William Scott, dated the 14<sup>th</sup> day of Feby. 1801 said to  
 contain one hundred nine acres, one hundred seven perches  
 & the usual allce of six P Cent, Examined the 24<sup>th</sup> day of May  
 1826, for E. W. Hale Esq the present owner, I found to interfere  
 with a survey made for John Slider on his warrant of 24<sup>th</sup>  
 Feby 1786, and appears to contain clear of Interference one hun-  
 dred seven acres, sixty three perches & allce of six P Cent  
 for roads &c. as above laid down &c.

To Gabriel Hiester Esqr. } P Robert Robison D.S.  
 Surveyr. Gen<sup>l</sup> of Penna. }

IN TESTIMONY that the above is a copy of the original remaining on file in  
 the Department of Internal Affairs of Pennsylvania, made  
 comformably to an Act of Assembly approved the 16th day of  
 February 1833, I have hereunto set my hand and caused  
 the Seal of said Department to be affixed at Harrisburg,  
 this sixteenth day of January 1908

Henry Howck  
 Secretary of Internal Affairs.